



1. Materials: see 3015 note 1.

2. When earth connection device is fitted for use with lead sheath cables the maximum diameter over lead sheath is as per column 'N3, N4' in the table.

3. STAMPING : All glands to be stamped on the circular band in the following manner:

Stamping Detail

HAWKE 501/421 SIZE / THREAD / SEAL TYPE /  I12GD ExdbIIIC
 Gb ExebIIIC Gb ExtbIIIC Db - 60 + 100°C Baseefa06ATEX0056X IP66
 IEC Ex BAS06.0013X OL70NA UK 1180 NEMA4X CE
 e.g. HAWKE 501/421 C / M32 / S /  I12GD ExdbIIIC
 Gb ExebIIIC Gb ExtbIIIC Db - 60 + 100°C Baseefa06ATEX0056X IP66
 IEC Ex BAS06.0013X OL70NA UK 1180 NEMA4X CE

Note: EPL's may be omitted and placed on packaging.

4. FINISH : This component may be coated or plated to suit the application.

5. OPERATING TEMPERATURE : The standard operating temperature range for this gland is -60°C to + 100°C.

6. SPECIFICATION : In accordance with the relevant requirements of EN60079-0, EN60079-1, EN60079-7, EN 60079-31 and IEC60079-0, IEC60079-1, IEC60079-7, and IEC 60079-31.

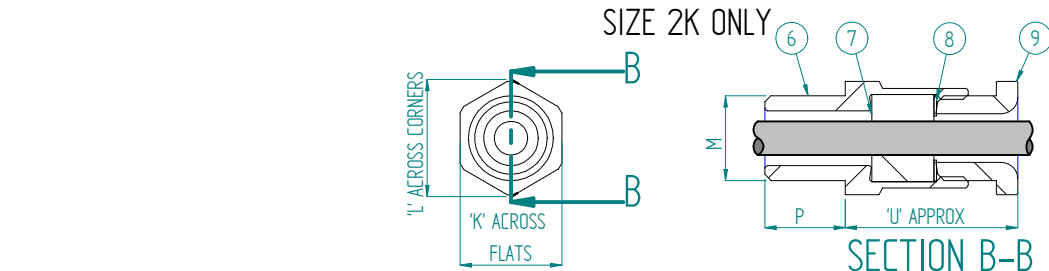
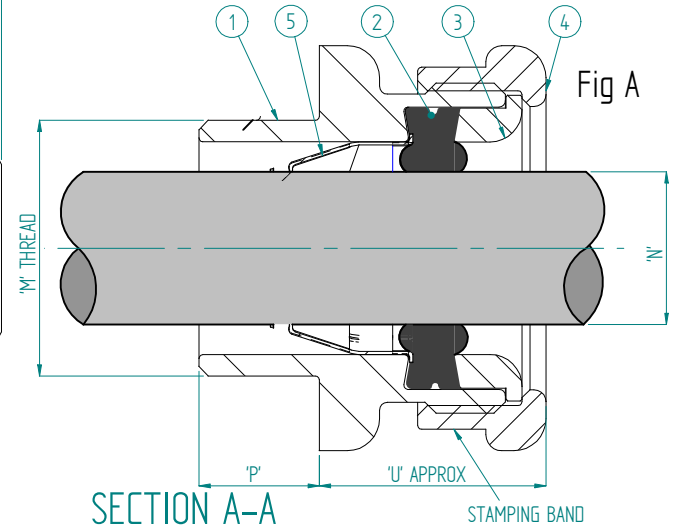
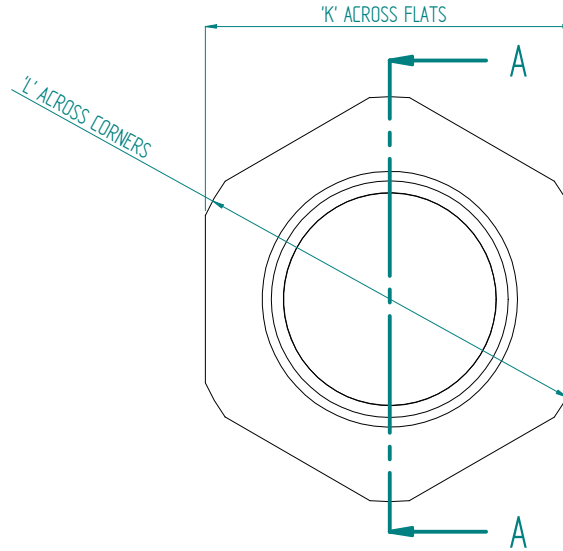
7. CABLE : This gland is suitable for non-armoured lead sheathed and or Elastomer or Plastic insulated cables.

8. VARIATIONS : Alternative gland body can have larger external dimensions with respect to the male coupling thread that are equal or larger to those shown in the table.

9. An option to use the deluge boot, 3000, is available for improved sealing.

Item No.	Part No. Fig A	Description	Qty
1	3250	Entry	1
2	3062 Std / 3005 Alt	Seal	1
3	3025	Spigot	1
4	3253	Back nut	1
5	3045 Optional	Continuity ring	1
SIZE 2K ONLY			
6	3080	Entry	1
7	3062	Seal	1
8	3027	Skid washer	1
9	3077	Spigot	1


OPTIONAL EARTHING CONNECTION 3045. (SEE NOTE 2)



SIZE REF.	'K'	'L'	M' THREAD SIZES							P' THREAD LENGTHS					CABLE								'U'		
			Metric Conduit		Pg	Parallel threads are medium fit or better		NPSM	Metric Imperial Pg	BSPP NPSM	BSPT	NPT	NPSM	N1 (3062) SEAL		N3 SEAL WITH 3045 FITTED		N2 (3005) SEAL		N4 SEAL WITH 3045 FITTED					
			3/4"	1"		BSPP BSPT	NPT							NPSM	MAX	MIN	MAX	MIN	MAX	MIN	MAX	MIN			
Os	24.0	27.7	M16 M20	3/4"	13.5 or 11.0	1/2"	1/2"	1/2"	15.0	15.0	18.6	19.9	15.0	8.0	3.2									38.0	
O	24.0	27.7	M16 M20	3/4"	13.5 or 11.0	1/2"	1/2"	1/2"	15.0	15.0	18.6	19.9	15.0	8.0	3.2	6.5	10.5	6.5					8.0	4.0	39.0
A	30.0	34.6	M20	3/4"	16.0	1/2"	1/2"	1/2"	15.0	15.0	18.6	19.9	15.0	14.3	10.0				13.4	9.0	13.4	9.0			38.0
B	36.0	41.6	M25	1"	21.0	1"	1"	1"	15.0	15.0	20.0	20.2	15.0	20.2	20.0	20.2	13.0	19.0	13.0	15.4	9.5	15.4	9.5		41.0
C	46.0	53.1	M32	1 1/4"	29.0	1"	1"	1"	15.0	15.0	20.0	23.7	25.0	20.0	26.5	19.5	25.0	19.5	21.2	15.5	21.2	15.5			43.0
C2	55.0	63.5	M40	1 1/2"	36.0	1 1/4"	1 1/4"	1 1/4"	15.0	15.0	20.0	26.0	25.6	20.0	32.5	25.0	31.2	25.0	28.0	22.0	28.0	22.0			42.0
D	65.0	75.1	M50	2"	42.0	2"	2"	2"	15.0	15.0	20.0	30.3	28.0	20.0	42.3	31.5	42.3	31.5	34.8	27.5	34.8	27.5			58.0
E	80.0	92.4	M63	2 1/2"		2 1/2"	2 1/2"	2 1/2"	15.0	15.0	20.0	33.6	28.0	20.0	54.3	42.5	54.3	42.5	46.5	39.0	46.5	39.0			53.0
F	95.0	109.6	M75	3"		3"	3"	3"	15.0	15.0	20.0	36.8	39.9	20.0	64.3	54.5	64.3	54.5	58.3	49.5	58.3	49.5			56.0
2K	19.0	21.2	M16						15.0					8.0	3.2										39.0

A3 THIS IS A CAD DRAWING AND MUST BE EDITED AT SOURCE

HAWKE International
 OXFORD ST WEST
 ASHTON-U-LYNE
 OL7 0NA
 TEL: +44 (0)161 308 3611

ALL COPYRIGHT RESERVED - HAWKE INTERNATIONAL 2005. THIS DRAWING AND ALL COPYRIGHT THEREIN IS THE PROPERTY OF HAWKE INTERNATIONAL, A DIVISION OF HUBBELL LIMITED. (A member of the Hubbell Group of Companies).

 (COPYRIGHT CONDITION: THIS DRAWING SHALL BE USED ONLY FOR THE PURPOSE FOR WHICH IT IS PROVIDED AND NO REPRODUCTION OR PUBLICATION OF THIS DRAWING MAY BE MADE AND NO ARTICLE MAY BE MANUFACTURED OR ASSEMBLED IN ACCORDANCE WITH THIS DRAWING WITHOUT THE PRIOR WRITTEN CONSENT OF THE OWNER.
 REMOVE ALL BURRS AND SHARP EDGES USING MINIMUM CHAMFER OR RADIUS. PARTICULARLY REMOVE ALL BURRS FROM START AND FINISH OF THREADS

3RD ANGLE PROJECTION
 DO NOT SCALE IF IN DOUBT ASK
 GENERAL TOLERANCES
 LINEAR ±
 ANGULAR ±
 UNLESS OTHERWISE STATED

Exe&Exd CHANGED TO Exeb&Exdb, TITLE CHANGED.	LJ 18/08/15	HEG16/0 29	K
ALT ASSY'S REMOVED.	AJT 16/08/11	HEG19/0 47	J
EPL'S ADDED, DIMS ALTERED IN TABLE	JC 30/06/10	HEG19/0 46	H
ALTERNATIVE ASSEMBLY and EPL'S ADDED Fig B, PARTS ADDED TO BOM- Temp 80°C Max	AT 22/10/07	HEG 07/013	G
NEW BORDER, DWG FORMAT ALTERED, BOM ADDED, 1180 WAS 0600	A.O. 26/11/04	HEG 05/013	F
OPERATING TEMPERATURE RANGE WAS -60 TO +80°C, NOW -60 TO +100°C.	A.O. 02/05/01	HEG 01/012	B
FIRST ISSUE	02/05/01 A.O.	HEG01/012	A
MODIFICATION	DATE/SIG	DCN	ISSUE

DRN BR
 CHD A.O.
 DATE 02/05/01
 UNITS mm

TITLE
 GENERAL ARRANGEMENT FOR
 UNARMoured 501/421 &
 501/421 2K GLAND.

DRG. No.
501/421
 SCALE N.T.S. SHEET 1 OF 1