

1. Materials: see 3015 note 1.

2. When earth connection device is fitted for use with lead sheath cables the maximum diameter over lead sheath is as per column '03 and 04' in the table.

3. STAMPING : All glands to be stamped on the circular band in the following manner:

Stamping Detail

HAWKE 501/453RAC SIZE / THREAD / ARMOUR RING TYPE / SEAL TYPE / II2GD ExdIIC
 Exell ExtD - 60 + 80°C Baseefa06ATEX0056X A21 IP66
 IEC Ex BAS06.0013X OL70NA UK 1180 NEMA4X

e.g. HAWKE 501/453RAC C / M32 / R / S / II2GD ExdIIC
 Exell ExtD - 60 + 80°C Baseefa06ATEX0056X A21 IP66
 IEC Ex BAS06.0013X OL70NA UK 1180 NEMA4X

4. FINISH : This component may be coated or plated to suit the application.

5. OPERATING TEMPERATURE : The standard operating temperature range for this gland is -60°C to + 80°C.

6. SPECIFICATION : In accordance with the relevant requirements of EN60079-0, EN60079-1, EN60079-7, EN 61241-1-1) and IEC60079-0, IEC60079-1, IEC60079-7 and IEC 61241-1-1.

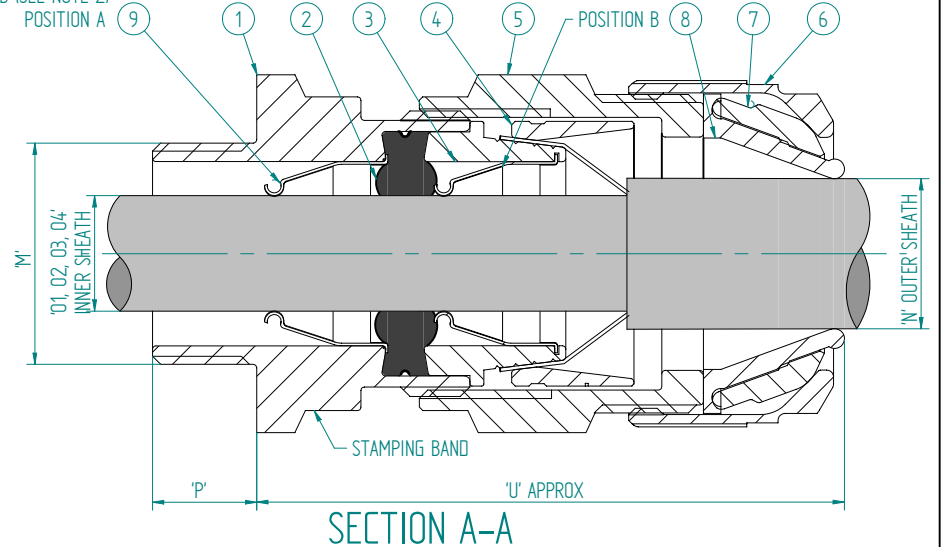
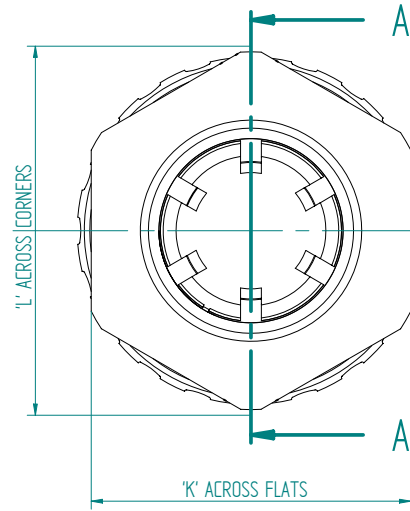
7. CABLE : This gland is suitable for the following Elastomer or plastic insulated cables- single steel wire, single aluminium wire, single and double tape armour, braided and unarmoured.

8. VARIATIONS : Alternative gland body can have larger external dimensions with respect to the male coupling thread that are equal or larger to those shown in the table.

9. An option to use the deluge boot, 3000, is available for improved sealing.

Item No.	Part No.	Description	Qty
1	3044	Entry	1
2	3062 Std / 3005 Alt	Seal	1
3	3047	Spigot	1
4	3041(STD), 3142(ALT)	Compression ring	1
5	3055	Middle nut	1
6	3034	Back nut	1
7	3035	Back nut seal	1
8	3036	Back nut clamp	1
9	3045 Optional	Continuity ring	1

OPTIONAL EARTHING CONNECTION 3045. 1off to be fitted in position A or B (SEE NOTE 2) POSITION A



SIZE REF	'K'	'L'	'M' THREAD SIZES				'P' THREAD LENGTHS				CABLE																	
			Parallel threads are medium fit or better								'O' INNER SHEATH				OUTER SHEATH													
			Metric Conduit	Imperial Conduit	Pg	BSP BSPT	NPT	NFSM	Metric Imperial Pg	BSP	BSPT	NPT	NFSM	O1 (3062) SEAL	O3 SEAL WITH 3045 FITTED	O2 (3005) SEAL	O4 SEAL WITH 3045 FITTED	'N'	'U'	'V' ARMOUR (3041 STD, 3142 A)								
Os	24.0	27.7	M16 M20	3/4"	13.5 or 11.0	1/2"	1/2"	1/2"	15.0	15.0	18.6	19.9	15.0	8.0	3.0					12.0	5.5	81.0	0-0.7XXZ 09-1.25W	0.4-0.8XXZ 0.8				
O	24.0	27.7	M16 M20	3/4"	13.5 or 11.0	1/2"	1/2"	1/2"	15.0	15.0	18.6	19.9	15.0	M16 M20 11.9	6.5	10.5	6.5			8.0	4.0	16.0	9.5	81.0	0-0.7XXZ 09-1.25W	0.4-0.8XXZ 0.8		
A	30.0	34.6	M20	3/4"	16.0	1/2"	1/2"	1/2"	15.0	15.0	18.6	19.9	15.0	14.3	10.0					13.4	8.5	13.0	8.5	20.5	12.5	83.0	0-0.7XXZ 09-1.25W	0.4-0.8XXZ 0.8
B	36.0	41.6	M25	1"	21.0	3/4"	3/4"	3/4"	15.0	15.0	20.0	20.2	15.0	20.2	12.5	19.0	12.5	15.4	9.5	15.4	9.5	26.0	16.9	95.0	0-0.7XXZ 1.25-1.6W	0.5-0.9XXZ 0.9		
C	46.0	53.1	M32	1 1/4"	29.0	1"	1"	1"	15.0	20.0	23.7	25.0	20.0	20.0	26.5	19.0	25.0	19.0	21.2	14.5	21.2	14.5	33.0	22.0	98.0	0-0.7XZ 1.6-2.0W	0.6-1.2XZ 1.2	
C2	55.0	63.5	M40	1 1/2"	36.0	1 1/4"	1 1/4"	1 1/4"	15.0	20.0	26.0	25.6	20.0	32.5	25.0	31.2	25.0	28.0	22.0	28.0	22.0	41.0	28.0	105.0	0-0.7XZ 1.6-2.0W	0.6-1.2XZ 1.2		
D	65.0	75.1	M50	2"	42.0	2"	1 1/2"	2"	15.0	20.0	30.3	26.0	20.0	42.3	31.5	42.3	31.5	34.8	27.5	34.8	27.5	52.6	36.0	133.0	0-1.0XZ 1.8-2.5WY	1.0-1.45XZ 1.45		
E	80.0	92.4	M63	2 1/2"		2 1/2"	2"	2 1/2"	15.0	20.0	33.6	26.9	20.0	54.3	42.5	53.3	42.5	46.5	39.0	46.5	39.0	65.3	46.0	126.0	0-1.0XZ 1.8-2.5WY	1.0-1.45XZ 1.45		
F	95.0	109.6	M75	3"		3"	2 1/2"	3"	15.0	20.0	36.8	39.9	20.0	65.3	54.5	64.3	54.5	58.3	48.5	58.3	48.5	78.0	57.0	134.0	0-1.0XZ 1.8-2.5WY	1.0-1.45XZ 1.45		

A3 THIS IS A CAD DRAWING AND MUST BE EDITED AT SOURCE

HAWKE International
 OXFORD ST WEST
 ASHTON-U-LYNE
 OL7 0NA
 TEL: +44 (0)161 308 3611

ALL COPYRIGHT RESERVED - HAWKE INTERNATIONAL 2005. THIS DRAWING AND ALL COPYRIGHT THEREIN IS THE PROPERTY OF HAWKE INTERNATIONAL, A DIVISION OF HUBBELL LIMITED. (A member of the Hubbell Group of Companies).

 (COPYRIGHT CONDITION: THIS DRAWING SHALL BE USED ONLY FOR THE PURPOSE FOR WHICH IT IS PROVIDED AND NO REPRODUCTION OR PUBLICATION OF THIS DRAWING MAY BE MADE AND NO ARTICLE MAY BE MANUFACTURED OR ASSEMBLED IN ACCORDANCE WITH THIS DRAWING WITHOUT THE PRIOR WRITTEN CONSENT OF THE OWNER.
 REMOVE ALL BURRS AND SHARP EDGES USING MINIMUM CHAMFER OR RADIUS. PARTICULARLY REMOVE ALL BURRS FROM START AND FINISH OF THREADS

3RD ANGLE PROJECTION
 DO NOT SCALE IF IN DOUBT ASK
 GENERAL TOLERANCES
 LINEAR ±
 ANGULAR ±
 UNLESS OTHERWISE STATED

NEW BORDER, DWG FORMAT ALTERED, BOM ADDED, 1180 WAS 0600	A.O.	26/11/04	HCG 05/013	F
EARTHING CONNECTION POSITION B ADDED	A.O.	26/11/04	HCG 02/013	B
FIRST ISSUE	A.O.	02/05/01	HCG 01/012	A
MODIFICATION	DATE/SIG	DCN	ISSUE	

DRN BR
 CHD A.O.
 DATE 02/05/01
 UNITS mm
 TITLE
 GENERAL ARRANGEMENT OF TYPE 501/453 RAC/L.

DRG. No.
501/453 RAC/L
 SCALE N.T.S. SHEET 1 OF 1