

Control and Distribution Boxes made of Stainless Steel Series 8150

STAHL



- > Circumferential protection channel prevents water entry
- > Extended temperature range due to high-quality seal materials
- > Optionally with hinges / cam locks or screw-on cover
- > Hinge versions with large opening angle 130°
- > Flange plates tightened from the outside enables simple installation
- > Standard sizes on stock
- > Special sizes on request

E4

www.stahl.de



14111E00

Control devices and control units are assembled clearly in control stations Series 8150. The enclosure is available in brush finished stainless steel 1.4404 (AISI 316L) and 1.4301 (AISI 304). The product range includes a wide range of enclosure sizes with different heights. Since there are so many possible combinations of components, every control station Series 8150 is designed and manufactured to order. The number of devices installed depends on the size of the control station as well as on the space required for the built-in devices.

| | ATEX / IECEx | | | | | |
|------------|--------------|---|---|----|----|----|
| Zone | 0 | 1 | 2 | 20 | 21 | 22 |
| For use in | | x | x | | x | x |

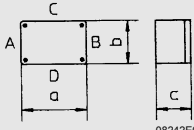
WebCode 8150B

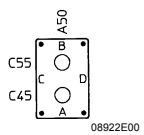
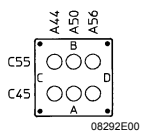
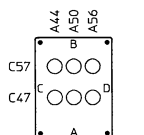
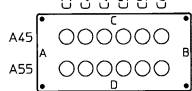
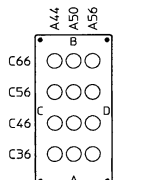
Control and Distribution Boxes made of Stainless Steel

Series 8150

Equipment Table for Control Boxes 8150, for built-in components with mounting grid 42 mm



Enclosure  Equipment configuration maximum options with built-in components with mounting grid 42 mm such as: control devices 8082, indicating lamps 8010 and illuminated pushbuttons 8082/8010

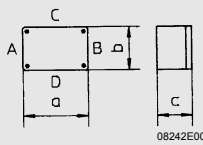
| Enclosure size | Dimensions [mm] | Equipment configuration | Enclosure material | Ordering code |
|------------------|--|---|--------------------|---------------------------|
| Enclosure size 4 | Dimensions [mm] a b c 176 116 91 | Fig. 4.1  | 1.4301 (AISI 304) | 8150/5-0176-0116-091-2311 |
| | | | 1.4404 (AISI 316L) | 8150/5-0176-0116-091-3311 |
| Side facing down | | A | | |
| Enclosure size 5 | Dimensions [mm] a b c 176 176 91 | Fig. 5.1  | 1.4301 (AISI 304) | 8150/5-0176-0176-091-2311 |
| | | | | |
| Side facing down | | A | | |
| Enclosure size 6 | Dimensions [mm] a b c 236 176 91 | Fig. 6.1  | 1.4301 (AISI 304) | 8150/5-0236-0176-091-2311 |
| | | | | |
| Side facing down | | A | | |
| Enclosure size 7 | Dimensions [mm] a b c 360 176 91 | Fig. 7.1  | 1.4301 (AISI 304) | 8150/5-0360-0176-091-2311 |
| | | | | |
| Side facing down | | D | | |
| Enclosure size 7 | Dimensions [mm] a b c 360 176 91 | Fig. 7.3  | 1.4301 (AISI 304) | 8150/5-0360-0176-091-2311 |
| | | | | |
| Side facing down | | A | | |

Control and Distribution Boxes made of Stainless Steel

Series 8150



Enclosure



Equipment configuration
 maximum options with built-in components
 with mounting grid 42 mm such as:
 control devices 8082, indicating lamps 8010 and
 illuminated pushbuttons 8082/8010

Enclosure material

Ordering code

| Enclosure size | Dimensions [mm] | Fig. 8.1 | Fig. 8.2 | Enclosure material | Ordering code |
|------------------|---------------------------|----------|----------|--------------------|----------------------------------|
| Enclosure size 8 | a b c 360 360 91 | | | 1.4301 (AISI 304) | 8150/5-0360-0360-091-2311 |
| | | | | 1.4404 (AISI 316L) | 8150/5-0360-0360-091-3311 |
| Side facing down | | D | D | | |
| Enclosure size 9 | a b c 727 360 91 | | | 1.4301 (AISI 304) | 8150/5-0727-0360-091-2311 |
| | | | | 1.4404 (AISI 316L) | 8150/5-0727-0360-091-3311 |
| Side facing down | | D | | | |
| Enclosure size 9 | a b c 727 360 91 | | | 1.4301 (AISI 304) | 8150/5-0727-0360-091-2311 |
| | | | | 1.4404 (AISI 316L) | 8150/5-0727-0360-091-3311 |
| Side facing down | | A | A | | |

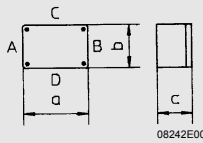
E4

Control and Distribution Boxes made of Stainless Steel

Series 8150



Enclosure



Equipment configuration
maximum options with built-in components
with mounting grid > 42 mm such as:
control switches 8008, ammeters 8405,
control devices 8082 with actuators $\varnothing > 38$ mm

Enclosure material

Ordering code

| | | | | | |
|------------------|--|----------|----------|--------------------|---------------------------|
| Enclosure size 8 | Dimensions [mm] a b c 360 360 91 | Fig. 8.3 | Fig. 8.4 | 1.4301 (AISI 304) | 8150/5-0360-0360-091-2311 |
| | | | | 1.4404 (AISI 316L) | 8150/5-0360-0360-091-3311 |
| Side facing down | | D | D | | |
| Enclosure size 9 | Dimensions [mm] a b c 727 360 91 | Fig. 9.4 | | 1.4301 (AISI 304) | 8150/5-0727-0360-091-2311 |
| | | | | 1.4404 (AISI 316L) | 8150/5-0727-0360-091-3311 |
| Side facing down | | D | | | |
| Enclosure size 9 | Dimensions [mm] a b c 727 360 91 | Fig. 9.5 | | 1.4301 (AISI 304) | 8150/5-0727-0360-091-2311 |
| | | | | 1.4404 (AISI 316L) | 8150/5-0727-0360-091-3311 |
| Side facing down | | D | | | |

E4

Explosion Protection

Global (IECEX)

Gas and dust | IECEx PTB 09.0049
Ex d e ia/ib [ia/ib] ma mb q IIA, IIB, IIC T6, T5, T4 Gb
Ex tb IIIC IP66 T130°C, T95°C, T80°C Db

Europe (ATEX)

Gas and dust | PTB 09 ATEX 1109
⊕ II 2 G Ex d e ia/ib [ia/ib] ma mb q IIA, IIB, IIC T6, T5, T4 Gb
⊕ II 2 D Ex tb IIIC IP66 T130°C, T95°C, T80°C Db

Certifications and certificates

Certificates | IECEx, ATEX

Technical Data

Electrical data

Rated operational voltage | max. 1100 V AC / DC
depending on explosion protected components used
Rated operational current | max. 630 A
depending on explosion protected components used
Rated cross section | 300 mm²
depending on explosion protected components used

Ambient conditions

Ambient temperature | - 60 ... + 85 °C ... depending on explosion protected components used

Control and Distribution Boxes made of Stainless Steel

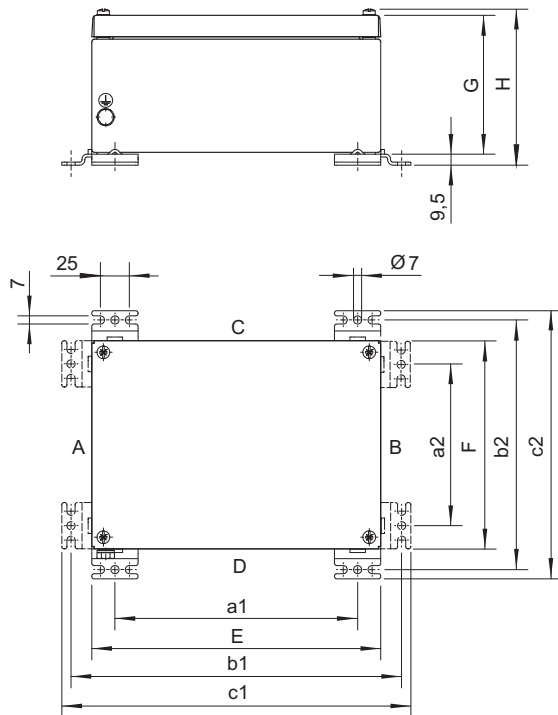
Series 8150

Technical Data

Mechanical data

| | |
|----------------------|--|
| Degree of protection | IP65 acc. to IEC/EN 60529 (others on request) |
| Material | |
| Enclosure | 8150/5-.....-2...: stainless steel 1.4301 (AISI 304), brush finished 8150/5-.....-3...: stainless steel 1.4404 (AISI 316L), brush finished |
| Sealing gasket | Silicone, foamed |
| Flanges | |
| Standard | In the standard version, the enclosures are supplied without flanges. |
| Option | Depending on order requirements the enclosures can be installed on one or more sides with flanges; flange material: stainless steel |
| Cover fixing | |
| Standard | with captive M6 stainless steel combo head screws |
| Option | with cover hinges |
| Connection | Depending on order requirements at the built-in components or at the terminal blocks. The rated operational voltage, the rated operational current and the rated cross-section depend on the terminal type used and the explosion protected components. |
| Terminals | Permissible rated cross-section which can be used - max. 300 mm ² . The maximum number of terminals for the respective enclosure size is indicated in the EC Type Examination Certificate. |
| Tightening torque | according to specifications of the terminal block manufacturer |

Dimensional Drawings (All Dimensions in mm) - Subject to Alterations



12648E00

| Type | Width | Height | Depth | Overall depth | Fastening dimensions [mm] | | | | | |
|----------------------|-------|--------|-------|---------------|---------------------------|-----|-----|-----|-----|-----|
| | E | F | G | | a1 | a2 | b1 | b2 | c1 | c2 |
| 8150/1-0176-0116-091 | 176,5 | 116,5 | 91 | 106 | 136 | 76 | 212 | 152 | 228 | 168 |
| 8150/1-0176-0176-091 | 176,5 | 176,5 | 91 | 106 | 136 | 136 | 212 | 212 | 228 | 228 |
| 8150/1-0236-0176-091 | 236,5 | 176,5 | 91 | 106 | 196 | 136 | 272 | 212 | 288 | 228 |
| 8150/1-0360-0176-091 | 360 | 176,5 | 91 | 106 | 320 | 136 | 396 | 212 | 412 | 228 |
| 8150/1-0360-0360-091 | 360 | 360 | 91 | 106 | 320 | 320 | 396 | 396 | 412 | 412 |
| 8150/1-0727-0360-091 | 727 | 360 | 91 | 106 | 687 | 320 | 763 | 396 | 779 | 412 |

We reserve the right to make alterations to the technical data, dimensions, weights, designs and products available without notice. The illustrations cannot be considered binding.